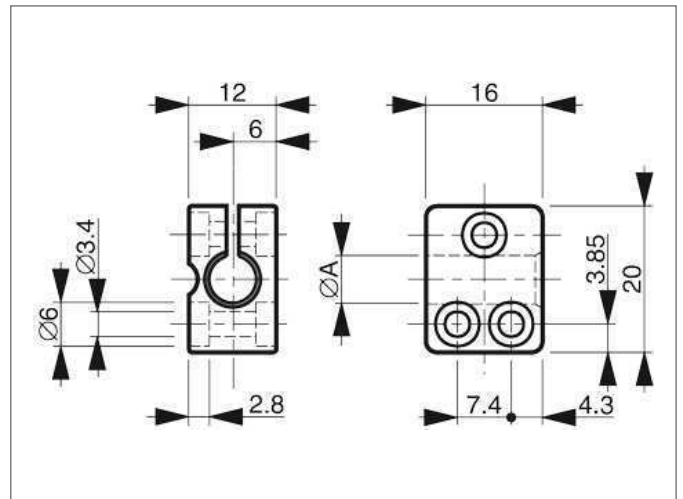


## SH 8 Sensor Holder

- For cylindrical Sensors of Ø 8 mm or thread M8
- Simple installation
- Reduced mounting/downtimes thanks to one-piece construction
- Sensor exchange without changing the clamp position
- Oblong holes permit clamp adjustment



### TECHNICAL INFORMATION (typ.)

Size	+20°C, 24V DC
Characteristics	8,0 mm (Clamping diameter A)
Casing material	without limit stop
	plastics (polyamide - PA 6 GK)